

User Manual



Note: Please remove the adhesive tape from the product before use!

The images are for reference only. Please rely on the actual product. Keep the original packaging for storage. Please read this manual carefully before using the product and keep it for future reference.

Contents

Part I - Important Safety Instructions / 01

Part II - Packing List / 02

Part III - Product Introduction / 02

3.1 Product Structure / 02

3.2 Control Panel / 02

3.3 Status Indicators / 02

Part IV - Operation / 03

4.1 Correct Placement / 03

4.2 Install Litter Box Liner and Deodorizer / 03

4.3 Turn on / 03

4.4 Add Litter / 03

4.5 Using With APP / 04

4.6 Start Operation / 04

4.7 Care and Cleaning / 04

Part V - Troubleshooting / 05

Part VI - Functional Parameters / 05

Part VII - Warranty Terms / 05

Thank you for purchasing Smart Litter Box! This product is designed for single or multi-cat homes. It features a unique dual rake structure that quickly and efficiently cleans cat litter. Read all instructions before use and save for future reference. Updates to the software and hardware may result in changes to this manual, including images, without prior notice.

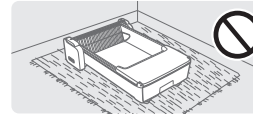


- This appliance can be used by children aged from 8 years and above and persons with reduced physical, sensory or mental capabilities or lack of experience and knowledge if they have been given supervision or instruction concerning use of the appliance in a safe way and understand the hazards involved.
- Children should be supervised and not allowed to play with the appliance.
- Children should not perform cleaning or maintenance of the appliance without supervision.

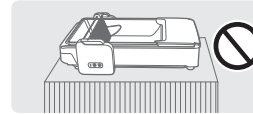
Part I: Important Safety Instructions



Ensure that your cat is at least 6 months old and weighs more than 1.5 kg. For cats with low mobility or slow reactions, set the smart litter box to 'Manual Cleaning' mode or turn off the auto-cleaning function in the APP.



DO NOT place on carpet. Place on a flat, hard surface.
DO NOT put anything in the unit.



DO NOT place the product on the edge of a high table to prevent damage from falling.

1.1 Intended Use

- Check whether the litter box liner is properly set, and spread out inside the waste bin. Ensure it does not interfere with the rake's movement.
- DO NOT exceed the maximum fill line when adding litter. Recommended: clumping litter. Avoid using tofu-based litter or litter with large particles.
- Use a cable tie to wrap the adapter power cord, so it doesn't get caught in the device while the cat plays.

1.2 Usage Instructions

- DO NOT place anything other than cat litter inside the litter box.
- DO NOT apply pressure or stack heavy objects on the litter box to avoid malfunction or damage.
- DO NOT touch internal components while the device is running. DO NOT manually rotate the rake.
- If the rake is stuck, please stop using it and follow the APP tips to troubleshoot.
- Please lift and move the product. DO NOT drag it on the floor.
- Clean the Litter tray and rake regularly. For stubborn clumps, manually remove them.
- After long-term use, the bottom and edges of the Litter tray may experience normal wear and tear. If concerned, replacement parts can be purchased separately.
- DO NOT wash the base directly with water. The rake, Litter tray, and waste bin are washable.

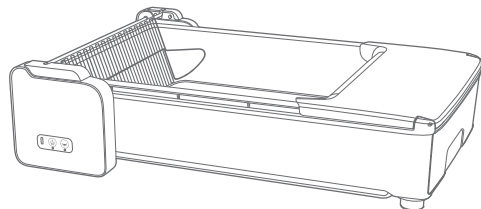
1.3 Electricity Safety

- DO NOT operate the appliance if it has a damaged power cord or plug, or if it is malfunctioning or has been damaged in any manner.
- The appliance is only to be used with the unit provided.
- DO NOT wet or submerge the bonnet or base, or allow moisture to come into contact with these parts.
- Always unplug when not in use, before putting on or taking off parts and before cleaning.

1.4 Related to Use

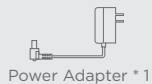
- DO NOT force your cat into the litter box.
- DO NOT attempt to disassemble, repair, modify or replace any part of your product. All servicing should be performed by qualified personnel only. No user serviceable parts inside.
- Dispose of all packaging materials properly. Keep away from children and pets.
- Always wash hands thoroughly after removing the waste. Pregnant women and those with suppressed immune systems should note that a parasite sometimes found in cat feces could cause toxoplasmosis.
- How often you will need to replace the litter box liner depends on the number and size of your cats. We recommend to replace every 2 to 3 days to avoid bacteria growth.

Part II: Packing List

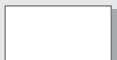


Smart Cat Litter Box * 1

Other Accessories



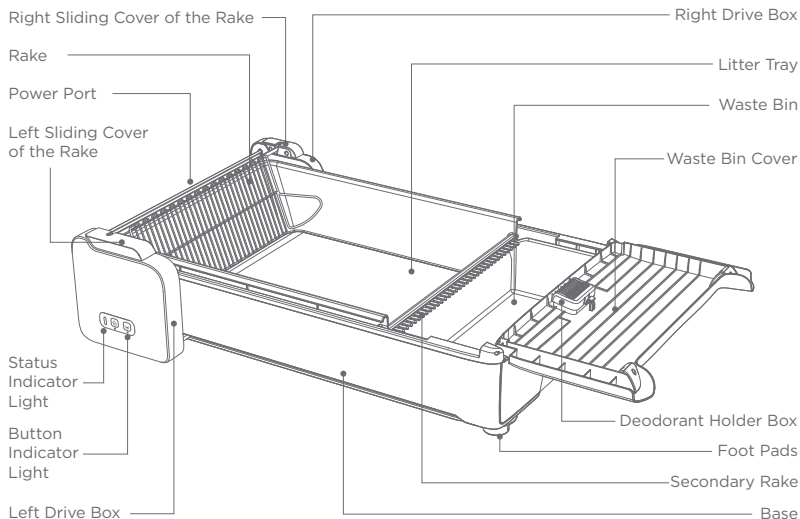
Power Adapter * 1



User Manual * 1

Part III: Product Introduction

3.1 Product Structure



3.2 Control Panel



- Clean**
- Press once to start cleaning. If already started, press it again to pause.
- Set Up Wi-Fi**
- Hold for 3s to start connecting with Wi-Fi (status indicator flashes blue).



- Flatten**
- Press once to start spreading the litter flat. If it's already started, press it again to pause.
- Child lock**
- Hold for 3s to lock or unlock (status indicator flashes green twice).



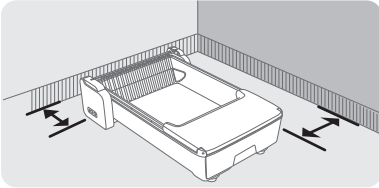
- Restore to Factory Settings**
- Hold and simultaneously for 5s to restore to factory settings.

3.3 Status Indicators

Status Indicators	Button Indicators ☒ No light ☉ Flash ☀ Solid	Function Description
Solid Blue	☒ ☒ / ☒ ☀	Normal working state: (1)Both button lights are off, the device is in standby; (2)The corresponding button light is on, the device is working.
	☀ ☀	Firmware upgrading
	☉ ☉	Restoring to factory settings
Flashing Blue	☒ ☒	Setting up Wi-Fi
Solid Green	☒ ☒	In the stationary state: (1)Affected by gravity; (2)Cat defecation
Flashing Green Twice	☒ ☒	Child Lock on/off
Flashing Green	☒ ☒	Reset or raise the rake
Solid Red	☒ ☉	When the function is paused, the corresponding button indicator will flash, and the status indicator will stay red until the pause ends.
	☒ ☀	When the function is affected by gravity, the corresponding button indicator will stay on, and the status indicator will stay red.
	☉ ☉	The rake is stuck during movement.

Part IV: Operation

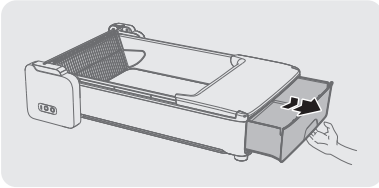
4.1 Correct Placement



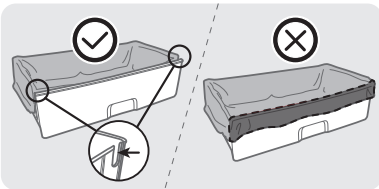
Place the litter box indoors on a firm, level surface and in a cool, dry location. DO NOT place it against any walls. Leave some space around the device. Make sure the product is close to the Wi-Fi signal source and away from other household appliances that may cause interference.

Note: If using a litter mat or carpet, DO NOT place the device's four feet on soft materials like carpet, as it may affect weight accuracy.

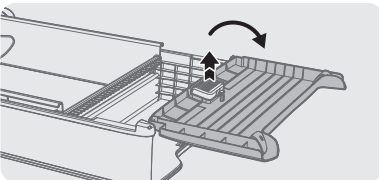
4.2 Install Litter Box Liner and Deodorizer



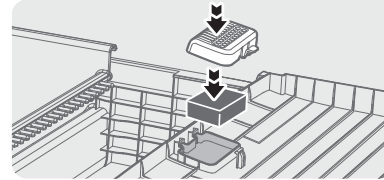
- 1 Pull out the waste bin from the front.



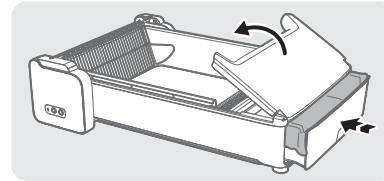
- 2 Place the litter box liner inside and smooth out the edges.
Note: The litter box liner should be hung in the gaps on both sides of the waste bin, and it should not be exposed in front of the waste bin.
It is recommended to use the provided trash bags. If using regular trash bags, ensure they do not interfere with the waste bin cover or the rake's movement.



- 3 Open the waste bin cover and remove the deodorant holder cover.

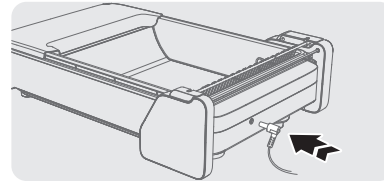


- 4 Place the deodorizer block inside and close the deodorant holder cover.
Note: The deodorizer needs to be purchased separately.



- 5 Close the waste bin cover and return the waste bin to the smart litter box.

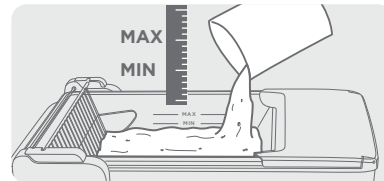
4.3 Turn on




Plug in the power and wait for the device to automatically reset before use.

Note: Use a cable tie to wrap the adapter power cord, so it doesn't get caught in the device while the cat plays.

4.4 Add Litter



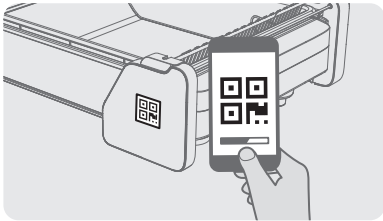
Add an appropriate amount of litter and click  to smooth out the litter.

Note: Do not exceed the MAX mark. It is recommended to use clumping litter. Avoid using tofu-based litter or litter with large particles.

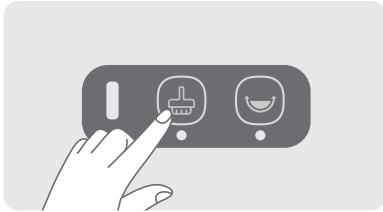
4.5 Using With APP





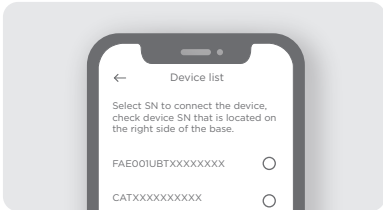
- Make sure your smart device is connected to a secure 2.4GHz network and Bluetooth is enabled.
- Ensure the power is on and the device is reset, and the status indicator is solid blue.



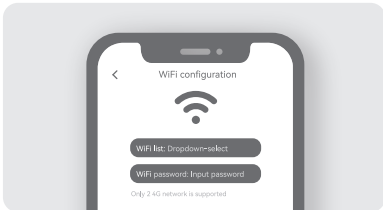
- 1 Scan QR code on the right side of the base to download APP, Register as instructed.



- 2 Hold  for 3s to bring the litter box into pairing mode (blue indicator flashing). Tap Next to continue.
Note: If you miss the network setup time, the status indicator will return to a steady blue light. Press and hold  again to start the network setup.



- 3 Select SN to connect the device, check device SN that is located on the right side of the base.



- 4 Select a 2.4GHz Wi-Fi network and enter password. Tap Next to complete connection.
Once successfully connected, the indicator will stay solid blue. If failed, follow the steps and retry.

4.6 Start Operation

There are three cleaning modes available for litter cleaning.

Mode	Description
Auto Mode	When the cat leaves the litter tray, the machine will clean litter automatically according to selected time period.
Manual Mode	The start, pause and automatic cleaning can be controlled via device and APP.
Do Not Disturb Mode	Set no interference time period via APP to avoid automatic cleaning.

Note:

It is normal for the rake to move back and forth several times during operation. If the rake gets stuck, please follow the APP's instructions to troubleshoot.

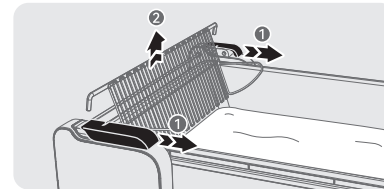
If a cat enters during the cleaning process, the system will pause and resume after the cat leaves.

It is recommended to regularly flatten the litter to ensure that the rake can operate smoothly.

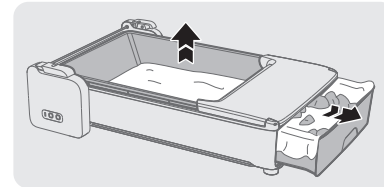
4.7 Care and Cleaning



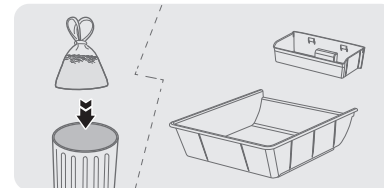
Disconnect the power and ensure the device is in its initial position. Cleaning in other positions may damage the device.



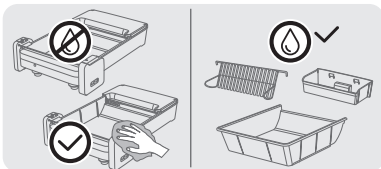
- 1 Slide the covers on both sides of the rake, then lift the rake upwards to remove it.



- 2 Remove the Litter tray by lifting it upwards, and also pull out the waste bin.



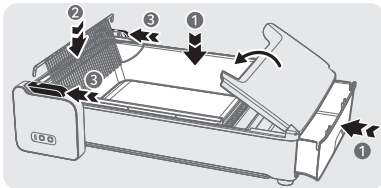
- 3 Empty the waste bin and Litter tray.



Wipe the base exterior and left/right drive units with a damp cloth. (DO NOT wash directly with water as they contain electronic components).

4 Use a damp cloth or a soft tool like a brush, to clean the rake, litter tray and waste bin.

Note: Do not use steel brushes or sharp objects to clean the litter tray, as this may damage the non-stick coating.



After wiping the parts or placing them in a ventilated area to dry, reinstall them into the device.

5 **Note:** After installing the rake, slide the covers on both sides to ensure they fully cover the metal bar.

Part V: Troubleshooting

NO.	Issue	Solution
1	How often should you add litter?	Based on the scale in the litter box, for one cat, add more litter every 2-3 weeks.
2	How often should you empty the waste bin?	For a single cat: empty daily in summer; empty every 2-3 days in spring and autumn. For multiple cats: empty daily.
3	How to reduce odors?	Use deodorizer block, high-quality litter, and keep the room well-ventilated.
4	How to prevent litter from being tracked out?	Place litter mats on both sides of the litter box or cat litter tent and clean them regularly.
5	What to do if the rake is stuck?	The system will try to solve the issue automatically. If it fails, it will enter protection mode, and the red light will flash with an APP alert.
6	What happens if a cat enters the litter box during cleaning?	The weight sensor detects when a cat enters. If a cat enters during cleaning, the process pauses until the cat leaves.
7	Can kittens or large cats use it?	Set the device to manual mode if the cat is under 6 months old, under 1.5kg, or has limited mobility.
8	How to obtain cat health information?	The APP tracks the number of uses and duration, helping to monitor the cat's health.
9	How to prevent sticking to the bottom?	(1) Use cat litter that is clumping and absorbent. (2) Adjust the clumping time in the APP. (3) Check for damage to the litter box material. (4) For more than 3 cats, consider adding another litter box. Diet Advice for Soft or Diarrheal Stool: Improve diet or adjust portion sizes. If the condition persists, consult a vet.
10	What to do if the weight is abnormal?	Disconnect and reconnect the power to restart the device. If the weight sensor is damaged, the device will stop sending usage notifications and cannot clean automatically. You can manually trigger cleaning by pressing (Ⓜ) on the device.
11	What to do if the rake is deformed?	Regularly clean the rake. If the rake is slightly deformed, you can try to manually correct them. If the deformation is severe, it is recommended to replace the rake.
12	What to do if the cat won't use it at first?	If your cats is easily scared or timid, better to guide them firstly, not plugging in the power adapter until they get used to the litter box, allow them to adapt to it like a traditional litter box.



The troubleshooting guide addresses the most common problems. If problems persist, feel free to contact the Customer Support at support@ubpet.com.

Part VI: Functional Parameters

Product Name	Smart Cat Litter Box
Product Model	UCAT C30 / UCAT C31 / UCAT C32
Main Material	PP
Product Size	700mm*482mm*194mm
Input	12V --- 1A
Rated Power	12W
For Cat	Weight 3.3-22lbs(1.5-10kg) / Age > 6 months
Machine Weight	5.0 kg
Compatible Litter	Clumping litter, Bentonite litter
Suitable Litter Box Liner	580mm (opening) * 250mm Drawstring Litter Box Liner

Part VII: Warranty Terms

7.1 Warranty Service

This product is provided with an after-sales warranty service according to the national Three Guarantees law. During the warranty period, if the product has performance faults not caused by human error, free maintenance will be provided after it is tested and confirmed by the UBTECH after-sales service personnel. This product is subject to the after-sales warranty service according to the national three-package law. If the product presents any non-human performance failure during the warranty period, free repair will be provided by the UBTECH after-sales service personnel following inspection and confirmation.

7.2 Warranty Period

The warranty period of the product: One year

7.3 The Warranty Scope Beyond The Warranty Period

The following cases are beyond and are not covered by the scope of warranty; however, UBTECH provides paid repair services. After the product is repaired by the paid service, UBTECH provides a 90-day warranty for the replaced parts.

- (1) When the products have exceeded their warranty period;
- (2) No warranty card or invoice is available, or the warranty card is inconsistent with the invoice information;
- (3) The contents on the Three Guarantees voucher are inconsistent with the physical identification of the product or have been altered;
- (4) Damage caused by private disassembly, private repair, repair or modification by after-sales service centers which are not authorized by Shenzhen Ubtech Robotics Corporation;
- (5) Failure or damage that is caused by the forced use of the product beyond the normal conditions of usage and non-compliant with the requirements of the Product's Operation Manual;
- (6) The damage is caused by immersion, dampness, mildew, falling or due to improper usage, such as breakage, deformation, wire fracture, crushing, etc.;
- (7) Natural aging, wear and consumption of plastic parts and other consumable materials;
- (8) Damage caused by force majeure.

7.4 Friendly Reminder

During the warranty period, consumers are provided with services in accordance with these

provisions. The purchase invoice or voucher and warranty card shall be provided for maintenance. In case the purchase invoice or voucher and warranty card cannot be provided, the activation date of the product can be deemed as the purchase date, or the date after 90 days of the date of manufacture displayed by the SN number on the device can be considered as the initial date of the warranty period.

Intended Use/Category	802.11 b Wi-Fi	802.11 g/n Wi-Fi	BLE
RF output power	20dBm	20dBm	10dBm
Frequency range(MHz)	2412-2472MHz	2412-2472MHz	2402-2480MHz
Modulation	DSSS	OFDM	GFSK

FCC ID: 2AHJX-UCATC30

This device complies with Part 15 of the FCC

Rules. Operation is subject to the following two conditions: (1) this device may not cause harmful interference, and (2) this device must accept any interference received, including interference that may cause undesired operation.

This appliance can be used by children aged from 8 years and above and persons with reduced physical, sensory or mental capabilities or lack of experience and knowledge if they have been given supervision or instruction concerning use of the appliance in a safe way and understand the hazards involved.

- Children shall not play with the appliance.

- Cleaning and user maintenance shall not be made by children without supervision.

The appliance is only to be used with the unit provided.

Warranty Card

User Information

Product Model: _____ Product No.: _____

Date of Purchase: _____ User Name: _____

Warranty Record

Warranty Date	Faults and Troubleshooting	Completion Date	User's Signature

Declaration of conformity

Manufacturer Name: (Or His authorized representative)	UBTECH ROBOTICS CORP LTD
Manufacturer Address: (Or His authorized representative)	Room 2201, Building C1 Nanshan Smart Park No. 1001 Xueyuan Avenue Changyuan Community Taoyuan Street Nanshan District Shenzhen PRC
Declare under our sole responsibility that the product	
Product Name:	Smart Cat Litter Box
Model:	UCAT C30 / UCAT C31 / UCAT C32
Hardware version:	VB
Software version:	V1.0
We hereby declare that all essential radio test suites have been carried out and that the above named product is in conformity to all the essential requirement of RED Directive 2014/53/EU. Its in conformity with the following standards or other normative documents	
Test standards	
EN IEC 55014-1:2021 EN IEC 55014-2:2021 EN IEC 61000-3-2:2019+A1:2021 EN 61000-3-3:2013+A1:2019+A2:2021 ETSI EN 301 489-1 V2.2.3 (2019-11) ETSI EN 301 489-17 V3.2.4 (2020-09) ETSI EN 300 328 V2.2.2 (2019-07) EN 50665:2017 EN 60335 1:2012 + A11:2014 + A13:2017 + A1:2019 + A14:2019+ A2:2019+A15:2021 and EN 62233: 2008	
The object of declaration described above is in conformity with the following relevant UK legislation:	
<ul style="list-style-type: none"> • Product Security and Telecommunications Infrastructure Act 2022 - Part 1 • The Product Security and Telecommunications Infrastructure (Security Requirements for Relevant Connectable Products) Regulations 2023 	
Conformity is shown by compliance with the applicable requirements of the following documents:	
Reference & Date Version Title	
ETSI EN 303 645:2020 V2.1.1 Cyber Security for Consumer Internet of Things: Baseline Requirements	
<ul style="list-style-type: none"> • 5.1 No universal default passwords • 5.2 Implement a means to manage reports of vulnerabilities • 5.3 Keep software updated 	
We will provide a 10-year product security support period from the first supply of the product.	
Name:	Wayne Cheng
Title :	Certification Manager
Date: 2025/3/20	<i>Wayne Cheng</i> Signature of Authorized Person



UBPet

UBTECH ROBOTICS CORP LTD

Room 2201, Building C1 Nanshan Smart Park No. 1001 Xueyuan Avenue Changyuan
Community Taoyuan Street Nanshan District Shenzhen PRC

E-mail: support@ubpet.com