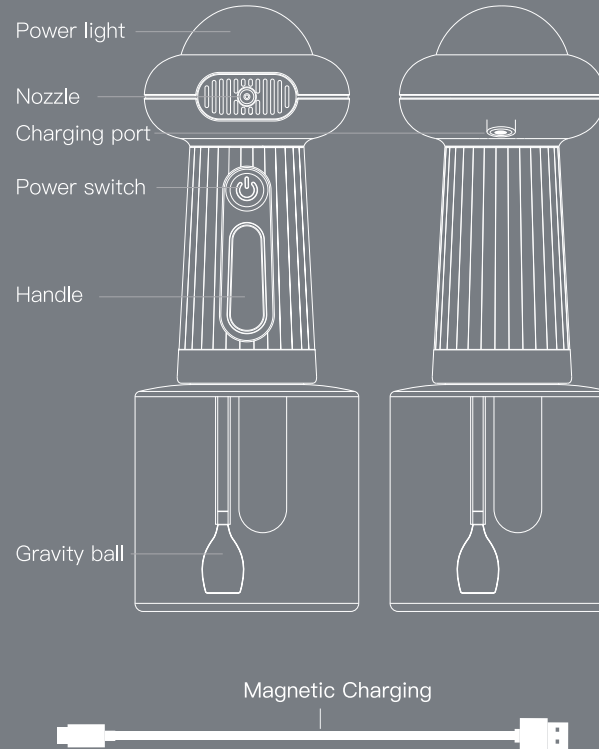


封面

Before operating, please read the manual carefully and keep it well for future conference.

01



02

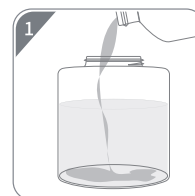
Power output: DC5V/1A
Rated voltage: 3.7V
Rated power: 1.7W
Battery capacity: 1300mAh
Charging time: 3 hours
Working hours: 2 hours
Product material: ABS
Net product weight: 270g
Bottle capacity: 400ml
Product size: 83×83×224mm
Accessories: Main body, Manual, Magnetic Charging.

Please charge the product first, use DC5V-1A and above adapter for charging,

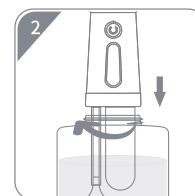
*The power adapter or charging plug is not included in this product.

03

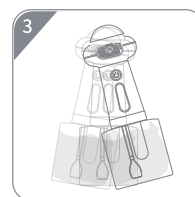
1. Dilute the shower gel and water according to the ratio of 1:6, which can be directly proportioned according to the scale line of the bottle body. (If it is a watery shower gel, it does not need to be diluted) as shown in Figure 1;
2. Screw the head of the machine into the bottle containing the shower gel, as shown in Figure 2;
3. Please shake the bath well before use, the foaming effect is better, as shown in Figure 3;
4. When using, hold the handle in your hand and press the switch button to spray, as shown in Figure 4.



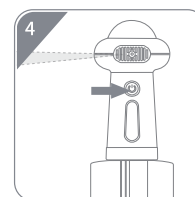
Pour in shower
gel to dilute it



Tighten the machine head with the bottle



Shake the bath well



Switch on

04

1. Please charge with DC5V-1A and above adapter, and charge it fully for the first time.
2. Do not charge in direct sunlight, near heating and in humid places.
3. The chemical reagents, detergents and high-duty detergents are not allowed to clean the product.
4. After use, the volumetric flask should be cleaned with clean water to avoid the drying of residual neutralizer affecting the performance of the product.
5. Please check if the foaming machine is in good condition before using. If not, please contact us.



Warnings

Do not point the machine nozzle at the face of pets or people when using to avoid the neutralizer splashing into the eyes and causing injury.







MADE IN CHINA

封底