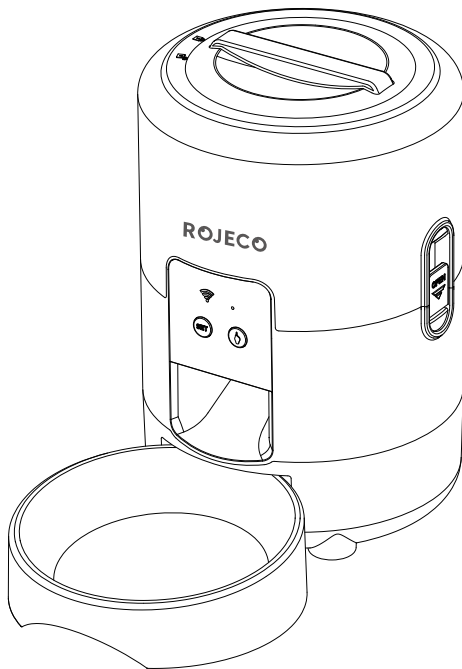


ROJECO

Pet Smart Feeder

User Manual



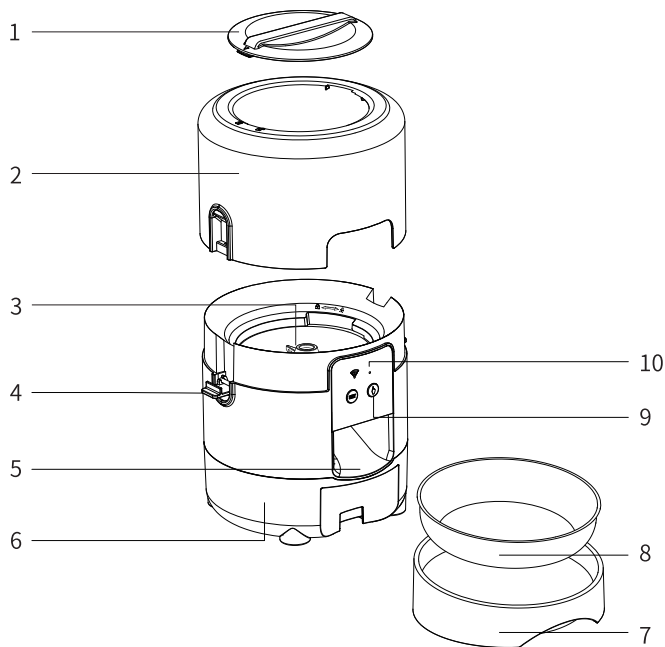
Model: PAF-186B-Wifi

Please read this manual carefully before use.

一. 产品介绍

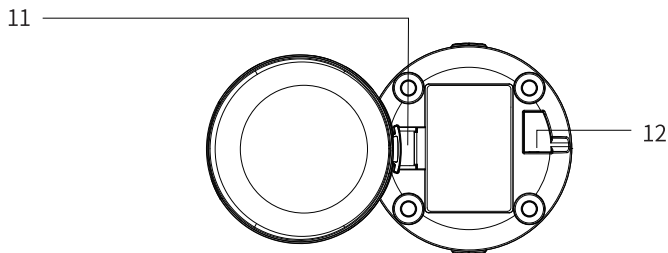
正视图

- 1. 盖子
- 2. 粮桶
- 3. 叶轮
- 4. 粮桶锁扣
- 5. 出粮口
- 6. 粮桶底座
- 7. 碗托盘
- 8. 不锈钢碗
- 9. 按键
- 10. LED指示灯



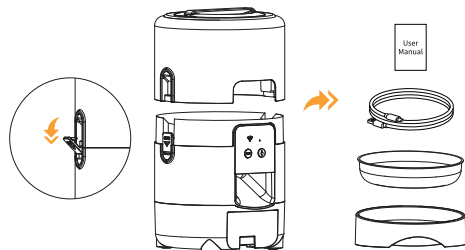
底视图

- 11. 电池仓
- 12. DC 电源接口



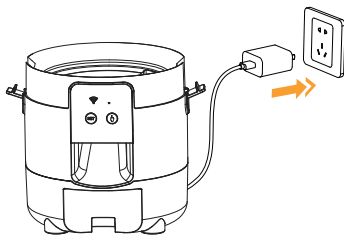
二. 如何安装

1. 掰开两侧的锁扣，将配件从喂食器底座上全部取下。

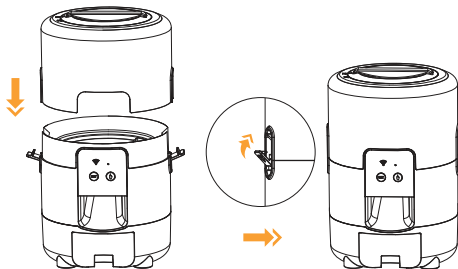


2. 插入5V电源适配器。如果需要，请安装3节1号干电池（不包括在内）以防停电。

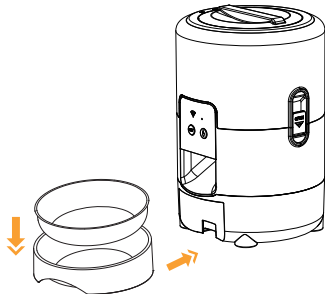
注：在仅电池供电时，LED屏不会常亮，喂食计划将在熄屏的情况下正常分配。当您按下任意按钮时，LED屏幕将亮起。



3. 安装粮桶，并将两侧粮桶锁扣向内紧扣。

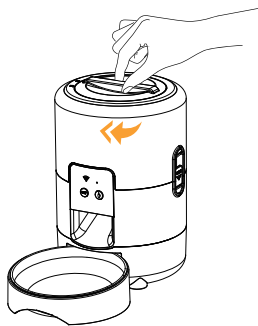
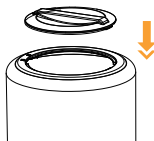
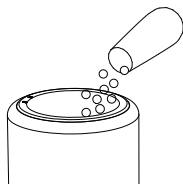


4. 将不锈钢碗放入食物托盘。提起喂食器并将食物托盘槽口滑入喂食器底部的凹槽中。



5. 用宠物最喜欢的干粮填充粮桶。将食物抹平, 盖上盖子, 顺时针旋转锁紧。

注: 适用于直径为2-15毫米/0.07-0.6英寸的干粮。较大的食物可能会卡在食物出口处。



三. 操作界面

WIFI 指示灯



低电量指示灯



设置按键

长按 6 秒, 设备将恢复
出厂设置, 指示灯快闪



手动喂食按键

短按出粮一份



四. 指示灯

指示灯颜色	动作	含义
蓝灯	闪烁	待联网
	常亮	联网成功
红灯	闪烁	低电量

五. 如何设置宠物喂食器

准备进程

- 系统: iPhone ios 系统 9.0 以上; 智能手机 Android 系统 4.4 以上。
- 手机要连接 2.4G wifi。如果你的 wifi 是 5G wifi, 设置为 2.4G wifi。
- WiFi 密码由不超过 12 位数字和字母组成。不支持特殊符号。不要使用中文。
- 确保手机上的蓝牙和定位服务“开启”。
- 请将喂食器靠近 WiFi 路由器。宠物喂食器和 WiFi 路由器之间的距离不超过 33 英尺 /10 米, 并且它们之间没有墙壁障碍。

下载APP并登录

- 扫描二维码或在 App Store 或 Google Play 搜索“ROJECO”下载 APP。



ROJECO

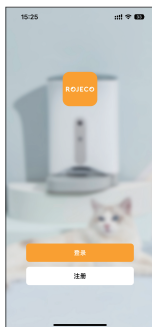


App Store



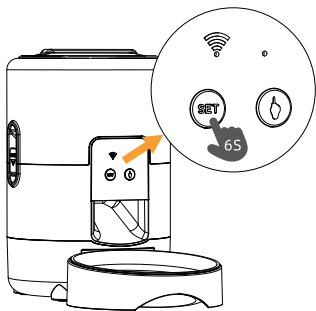
Google Play

- 注册并登录账号。



注意: App 语言取决于您的手机默认语言。

添加设备



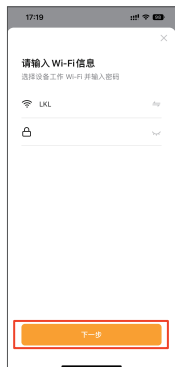
1. 长按“ ”6秒，进入配网状态。



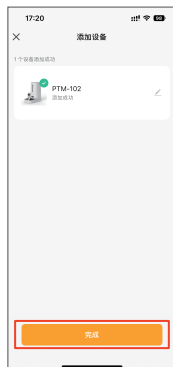
2. 首先打开手机蓝牙和WiFi，然后打开“ROJECO app”，点击“添加设备”或“+”。



3. 出现“ROJECO Feeder”，点击“添加”。



4. 输入“WIFI 名称及密码”点击“下一步”。



5. 单击“完成”连接成功后，蓝灯常亮。

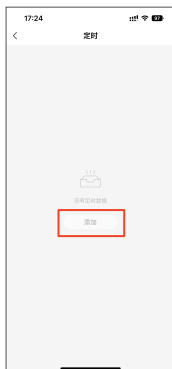


6. 进入主页面。您可以选择份数然后点击“快速喂食”立即开始喂食。

添加喂食计划



1. 点击“喂食计划”进入设置页面。



2. 单击“添加”按钮，添加喂食计划。



3. 根据需要设置时间和份数，单击“保存”完成。

添加喂食计划界面说明



计划1

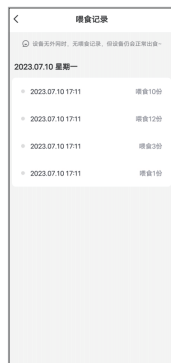
8:30(每周三、周四、周五、周六)/6份。



计划2

12:00每天/12份。

喂食记录



1. 点击“喂食记录”。

2. 进入“喂食记录”页面。

注：断开网络后，机器将继续按照您的喂养计划喂养您的宠物，但喂养记录不会同步更新。

热点配网

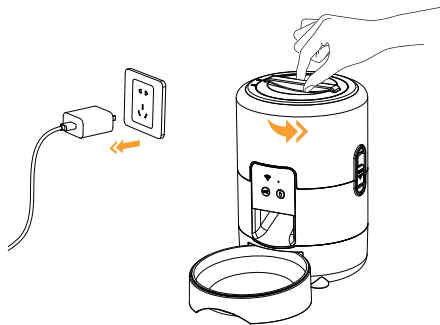
• 如果家里没有 wifi 信号。请将您的手机与另一部手机的热点连接，并确保手机上的蓝牙已打开。

① 打开 ROJECO APP，选择添加设备——手动添加——小家电——宠物喂食器 (Wi-Fi)——输入 WiFi 密码下一步——右上角 Wi-Fi 快连改成“热点配网（兼容模式）”下一步——然后去连接 SmartLife-XXXX 的 WiFi 信号。

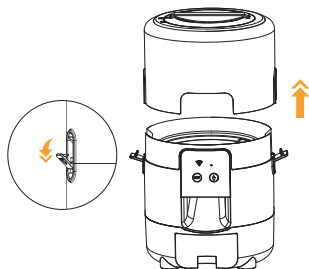
② 连接上后返回上一界面，下一步进入配网界面等待连接。

六. 拆卸清洁

1. 断开电源，逆时针旋转盖子，往上提起上盖。

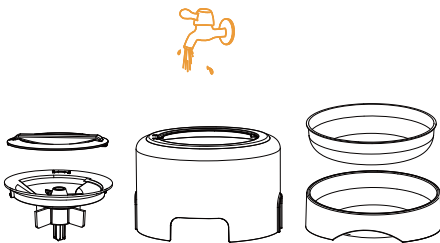


2. 拆下粮桶：将两侧的锁扣向外打开。



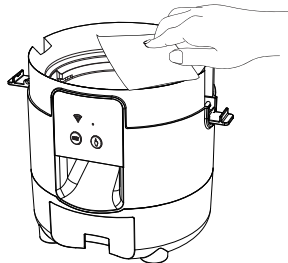
可冲洗部件

注：请勿用洗碗机清洗



擦拭主机

注：不可冲洗



注：为了宠物的健康，建议每个月清洁一次。

七. 参数

容量	2L	电池供电	DC圆口/3*D电池
材质	ABS+304不锈钢	输出电源	5V/1A
尺寸	180*180*270 mm	重量	1.08kg

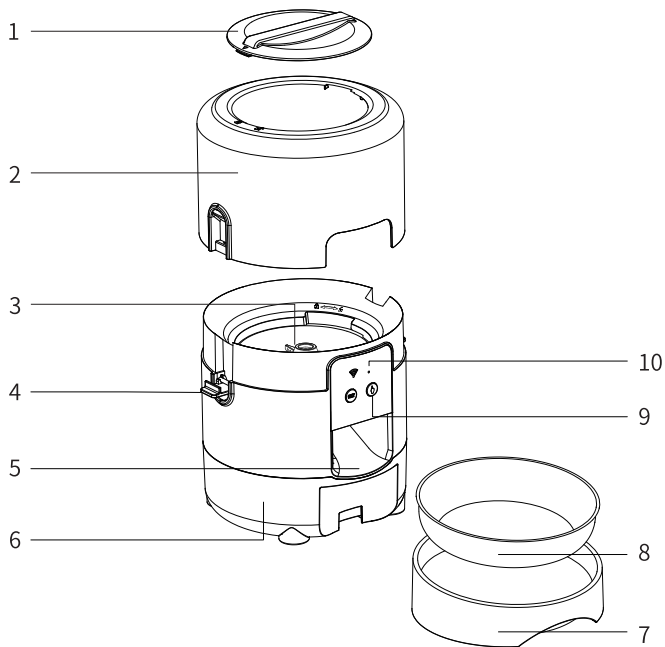
八. 故障排查

问题	解决方案
设备不出粮	1) 检查设备供电是否正常。 2) 手动喂食，确认是否可以出粮。 3) 检查宠物粮食大小是否在15mm以内。 4) 检查当前时间是否正确，喂食计划是否保存。 5) 检查出粮口是否食物过多，导致堵塞。
屏幕不亮	检查设备是否仅电池供电。 注意：设备仅电池供电时，会进入待机状态，屏幕不亮，喂食计划将在熄屏状态下正常分配出粮。
餐数不亮	当喂食计划执行完成时，MEAL数字将隐藏，会在24:00过后再亮起。
出粮不准确	由于宠物粮食的颗粒度不同，会导致出粮量稍有偏差。 注意：前几份出粮量差异较大，并不意味着设备有故障，出粮4份后，每份几乎是均匀的。
低电量显示	控制面板右侧有一个低电量指示灯。外出或出差时，请确认电量指示灯是否亮起并闪烁，请及时更换电池，以免宠物饿肚子。

1. Product Description

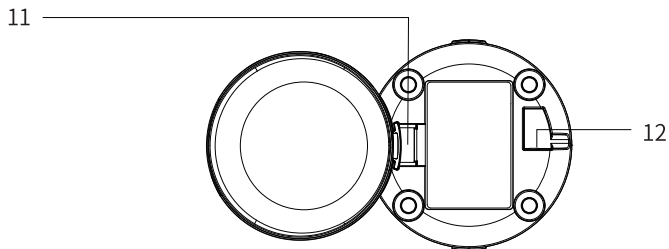
Front View

- 1. Lid
- 2. Food Tank
- 3. Rotor
- 4. Food Tank Lock
- 5. Food Outlet
- 6. Tank Base
- 7. Bowl Tray
- 8. Stainless Steel Bowl
- 9. Button
- 10. LED Indicator



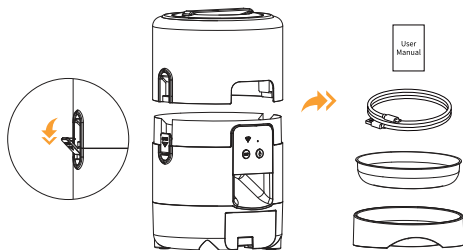
Bottom View

- 11. Battery Compartment
- 12. DC Charging Port



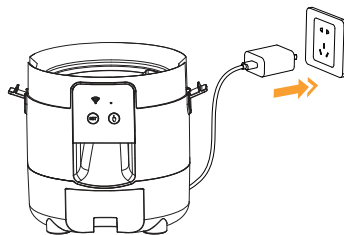
2. How to Install

1. Open the locks on both sides and remove all accessories from the feeder base.

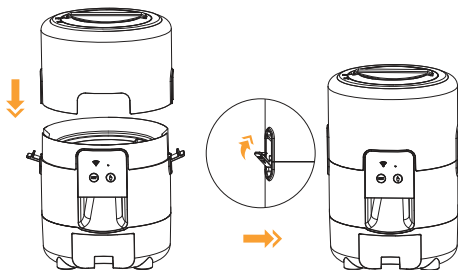


2. Plug in the 5V power adapter. If you want, install 3*D alkaline batteries (Not included) in case of a power failure.

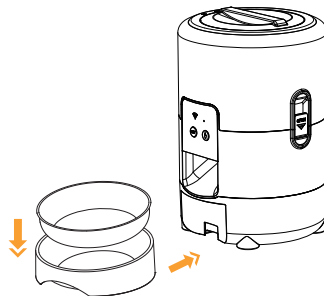
Note: When powered by battery only, the LED screen will not remain lit, and the feeding plan will be distributed normally even when the screen is off. The LED screen will light up when you press any button.



3. Install food tank and tighten both side tank latches inward.

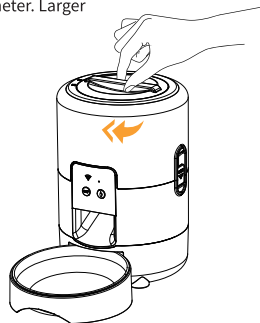
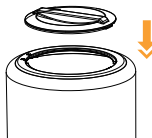
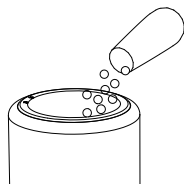


4. Place stainless steel bowl into the food tray. Lift feeder and slide the holder into the groove on the bottom of the feeder.



5. Fill the food tank with your pet's favourite dry food. Smooth out the food, put on the lid and turn clockwise to lock.

Note: Suitable for dry food with kibble size ranging from 2-15mm(0.07-0.6in) in diameter. Larger kibble may get stuck at the food outlet.



3. LED Display

WIFI Indicator



Low Battery Indicator



Set Button



Press and hold for 6s, to reset the device to factory settings, the indicator light will flash rapidly



Manual Feeding Button

Short press for one portion

4. Indicator Light

Indicator light colour	Action	Meaning
Blue light	Flashing	Waiting for network connection
	Always on	Successful networking
Red light	Flashing	Low battery

5. How To Set Pet Feeder

Preparation Process

- System: iPhone ios system 9.0 or above; Smartphone Android system 4.4 or above.
- Mobile phone should connect with 2.4G wifi. If your wifi is 5G wifi, set it to 2.4G wifi.
- The WiFi password is composed of no more than 12 digits and letters. No special symbols are supported. Do not use Chinese.
- Make sure Bluetooth and Location Services "on" on your phone.
- Please keep the feeder close to the WiFi router. The distance between pet feeder and WiFi router doesn't exceed 33ft/10m and there is no wall barriers between them.

Download APP & Login

- Scan the QR code or search for "ROJECO" on App Store or Google Play to download the app.



ROJECO

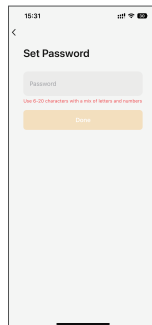
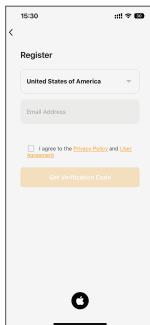
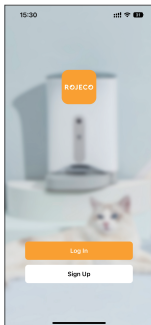


App Store



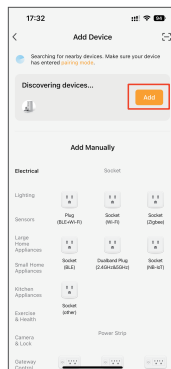
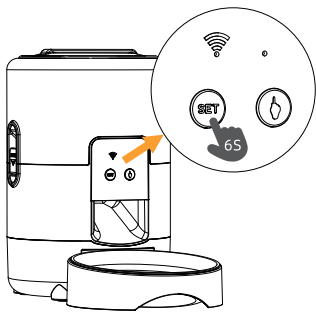
Google Play

- Sign up or Login your account.



Note: APP language depends on your mobile default language.

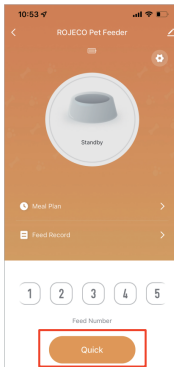
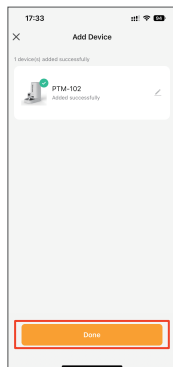
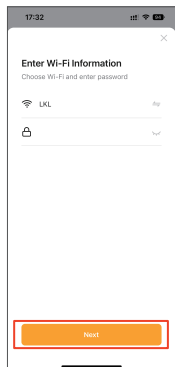
Add Device



1. Press and hold " **SET** " for 6 seconds to enter the network state.

2. Turn on Bluetooth & WiFi on your phone first and then open "**ROJECO App**", click "**Add Device**" or "+".

3. "**ROJECO Feeder**" will show, click "**Add**".

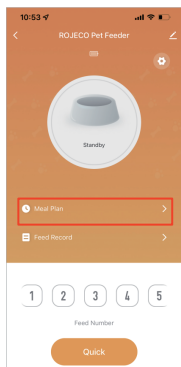


4. Enter WIFI password, click "**Next**".

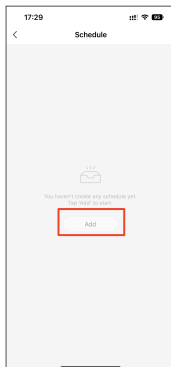
5. Click "**Done**" to connect successfully, the WiFi indicator light is always on.

6. Enter the main page. You can choose the portion , and then click "**Quick**" to start feeding immediately.

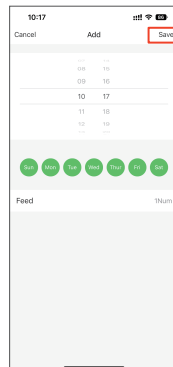
Add Meal Plan



1. Click **"Meal Plan"** to enter the setting page.

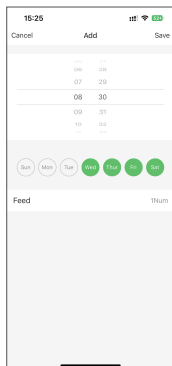


2. Click **"Add"** button to add feeding plan.



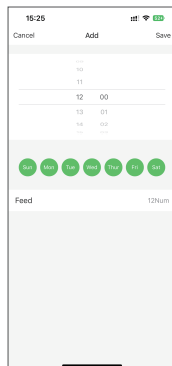
3. Set the schedule & portion based on needs. Click **"Save"** to finish.

Add Meal Interface Explanation



Plan1

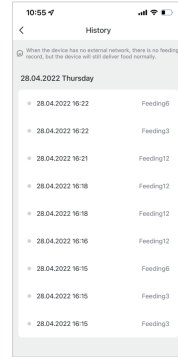
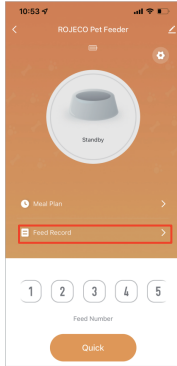
08:30(Every Wed.Thur.Fri.Sat.)/6 Portions.



Plan2

12:00 Every Day/12 Portions.

Feed Record



1. Click **"Feed Record"**.

2. Enter **"Feeding History"** page.

Note: After disconnecting your network, machine will keep feeding your pet according to your feeding plan without feeding record.

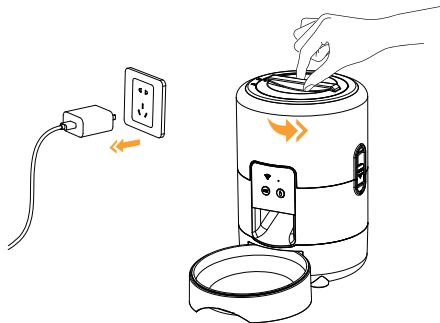
Hotspot Distribution Network

• If there is no wifi signal at home. Please connect your mobile phone to another mobile phone's hotspot and make sure that Bluetooth is turned on your mobile phone.

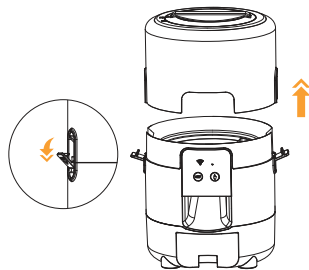
- ① Open the ROJECO APP, select Add Device—Manual Add—Small Home Appliances—Pet Feeder (Wi-Fi)—Enter WiFi Password Next—Wi-Fi Quick Connect in the upper right corner is changed to **"AP-Mode"** Next step—then connect to the WiFi signal of SmartLife-XXXX.
- ② After connecting, return to the previous interface, and then enter the network configuration interface to wait for the connection.

6. Disassemble for Cleaning

1. Disconnect the power supply, turn the cap counterclockwise, and lift the top cover upwards.

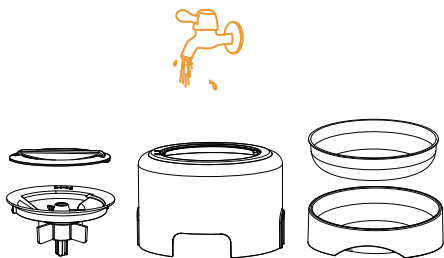


2. Remove the food tank: open the latches on both sides outwards.



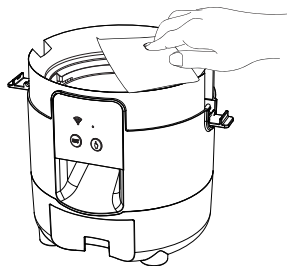
Washable parts.

Note: Do not wash in dishwasher.



Wipe the main unit.

Note: Do not rinse.



Note: For the health of your pet, cleaning is recommended once a month.

7. Specifications

Capacity	2L	Battery Power	DC/3*D battery
Material	ABS+304 Stainless Steel	Output	5V/1A
Dimensions	7.08*7.08*10.62 in	Weight	1.08 kg / 2.38 lb

8. Troubleshooting

Problem	Solution
Device does not deliver grain	<ol style="list-style-type: none"> 1) Check whether the power supply of the device is normal. 2) Manually feed the pet to check if the grain can be discharged. 3) Check if the pet grain size is within 15mm. 4) Check if the current time is correct and if the feeding schedule is saved. 5) Check if the food outlet is clogged with too much food.
Screen does not light up	<p>Check if the device is battery powered only.</p> <p>Note: When the unit is battery powered only, it will go into standby mode, the screen will not light up, and the feed plan will dispense food normally with the screen off. Click on the knob to wake up the screen.</p>
The MEAL does not light up	<p>When the feeding plan is executed and completed, the MEAL will be hidden and will light up again after 24:00.</p>
Inaccuracy of food delivery	<p>Due to the different granularity of pet food, it will lead to a slight deviation in the amount of food discharged.</p> <p>Note: A large difference in the amount of food dispensed in the first few portions does not mean that the equipment is faulty, after 6 portions of food are dispensed, each portion is almost even.</p>
Low battery indicator	<p>There is a low battery indicator light on the right side of the control panel. When going out or travelling, please check if the battery indicator light is on and flashing. Replace the batteries in a timely manner to prevent your pet from going hungry.</p>